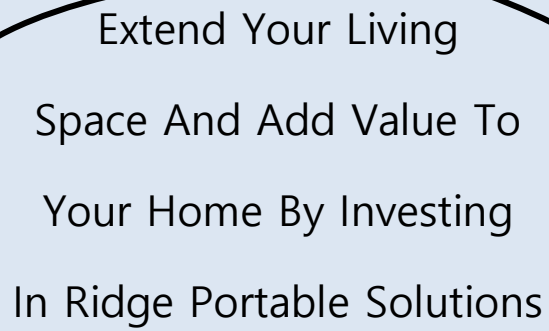




PRODUCT GUIDE



www.ridgeportablesolutions.com.au



Extend Your Living
Space And Add Value To
Your Home By Investing
In Ridge Portable Solutions

© 2018 Ridge Portable Solutions

ALL RIGHTS RESERVED. No part of this publication may be reproduced or transmitted in any form or by any means, mechanical or electronic, including photocopying and recording, or by any information storage and retrieval system, without permission in writing from the publisher.

Ridge Portable Solutions Official Price Guide"

Hi and Thank You,

Thank you for requesting pricing on our range of **Ridge Portable Solutions**. My name is **Brent Roberts**, General Manager of **Ridge Portable Solutions**.

Let me take a moment to explain a little about **Ridge Portable Solutions**.

We have become one of the best manufacturers of portable buildings in Australia.



**We Manufacture Portable Buildings
All Over Australia**

We can produce for you any size portable building from 2.4m x 3.0m to 3.0m x 12m or bigger, the choice really is yours!

To help you choose your new portable building you may like to read this price guide that has the 24 most popular floor plans of our portable buildings. Take a look, I am sure you will be impressed!

Call Us On 1300 933 035 And Talk To One Of Our Consultants

Once you have decided on the most suitable portable building for you, call us on 1300 933 035 and talk with one of our consultants. We can go through any of the questions you may have.

Then once you are satisfied that a new portable building is for you, we can get things started for you for a tiny deposit of only \$500.

On behalf of myself and my team at **Ridge Portable Solutions**, we are looking forward to helping you transform your outdoor living area.

Brent Roberts

**"Easy To Transport, Comfortable, Proven To Be
A Wise Investment For You Or Your Business"**

Here's what is included in the Portable Building as standard:

- ✓ **Full super strong steel skid base** – our base is up to 3 times the size of others; this saves you money long term, as the chances of twisting/warping and transport damage are almost nil.
- ✓ **19 mm flooring** – we fit strong flooring inside your new Portable Building. It is ready to take tiles, vinyl, carpet or can be left as is. Either way, combining the flooring with a super strong base is a strong foundation for your Portable Building.
- ✓ **Steel frame** – our framework is not timber – timber frames do not transport well; our framework is not pop rivets together – it is super strong. This adds even more rigidity to your Portable Building ensuring that you have the strongest investment possible.
- ✓ **Colourbond cladding** – we clad your walls with genuine Australian-made colourbond cladding – this gives you peace of mind that you have a quality cladding to ensure your new Portable Building can stand the heat, wind, rain and anything else the Australian sun can throw at it.
- ✓ **Colourbond roofing** – just like your walls, you need the best on your new Portable Building. Once again, we use genuine Australian steel on your roof.
- ✓ **Colour-coded fasteners** – all your new Portable Building fasteners and flashings are also colour coded so everything looks really neat.
- ✓ **Aluminium window** – as standard we have one 1200 x 1200 aluminium window with sliding glass; this gives you light inside while still giving you security when you are not around.
- ✓ **Access door** – what's a Portable Building without a door? Your door gives you security and peace of mind, which is why we include as standard a solid wooden door.

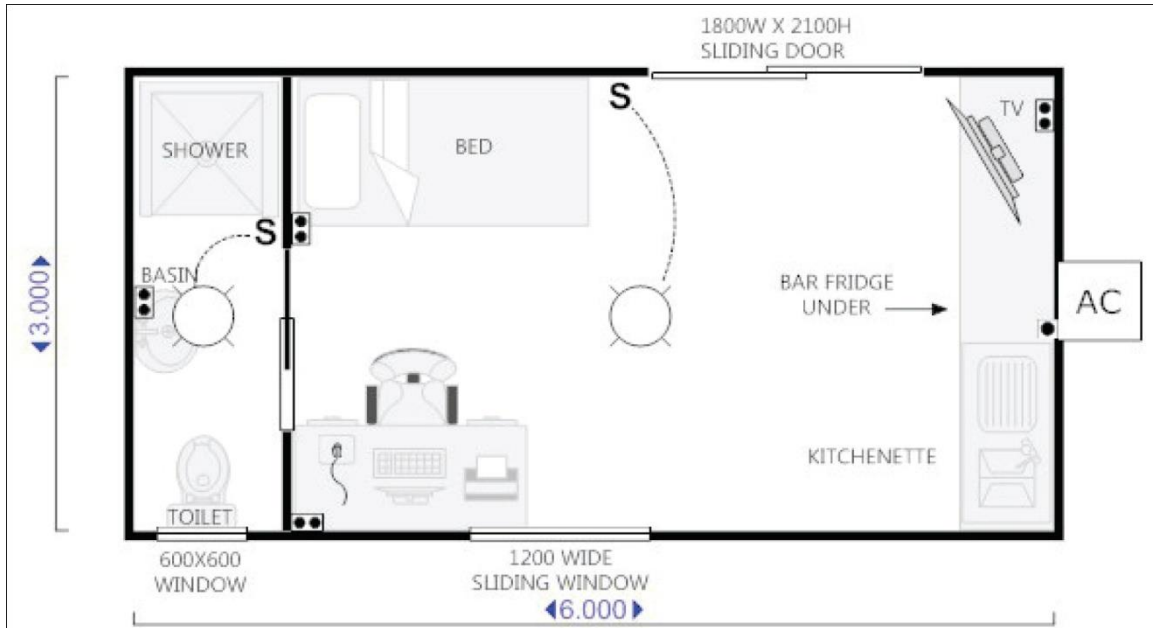
Optional Extras For Portable Buildings

We have wide range of customers; some customers like to purchase their Portable Building as standard, then DIY the rest, but others like it all done for them, so here are some of the options you can add:

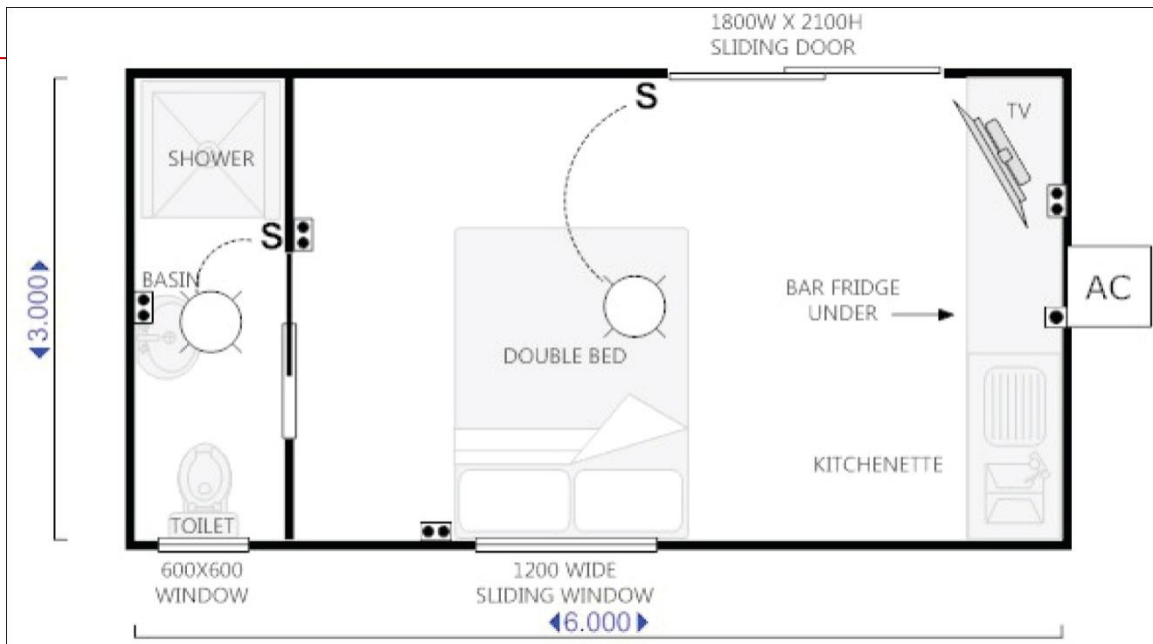
- ✓ **Optional insulation** – insulation of your walls gives you warmth in winter and coolness in summer.
- ✓ **Optional wiring** – we can wire up your new Portable Building however you like. We do also have a standard electrical pack that includes one light, two power points and one circuit box – just ask when you order.
- ✓ **Optional interior lining** – we can add Gyprock interior lining to your new Portable Building so when it arrives it is ready to go.
- ✓ **Optional air conditioning** – we can add an optional air conditioning unit to your Portable Building so you will stay cool and cosy in summer and winter.
- ✓ **Optional sliding door** – why not add even more light with an optional sliding door to your new Portable Building?
- ✓ **Optional extra windows** – add windows wherever you like.
- ✓ **Optional kitchenette** – a sink, cupboards and drawers make your life easy onsite or at home.
- ✓ **Optional shower** – our inbuilt shower module gives you a home away from home, and a fully contained Portable Building.
- ✓ **Optional toilet** – with or without a shower, we can add a toilet to your Portable Building, so when your new building arrives, it's ready to go.
- ✓ **Custom options** – just let us know what you want; we will do our best to help.

Ridge Portable Solutions, the only portable building that gives you an instant solution to your space problems – call us today on **1300 933 035** or fill in the form at the top of the page for instant pricing and free info package.

6.0 x 3.0m Range

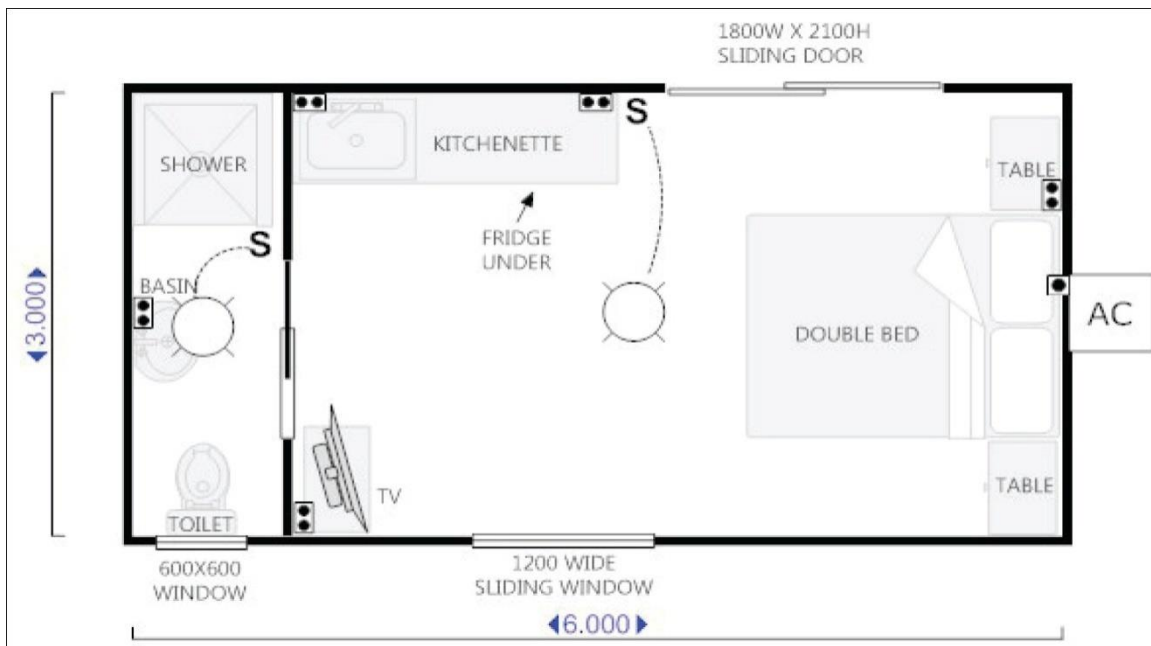


6.0 x 3.0 m Plan A
\$34,404

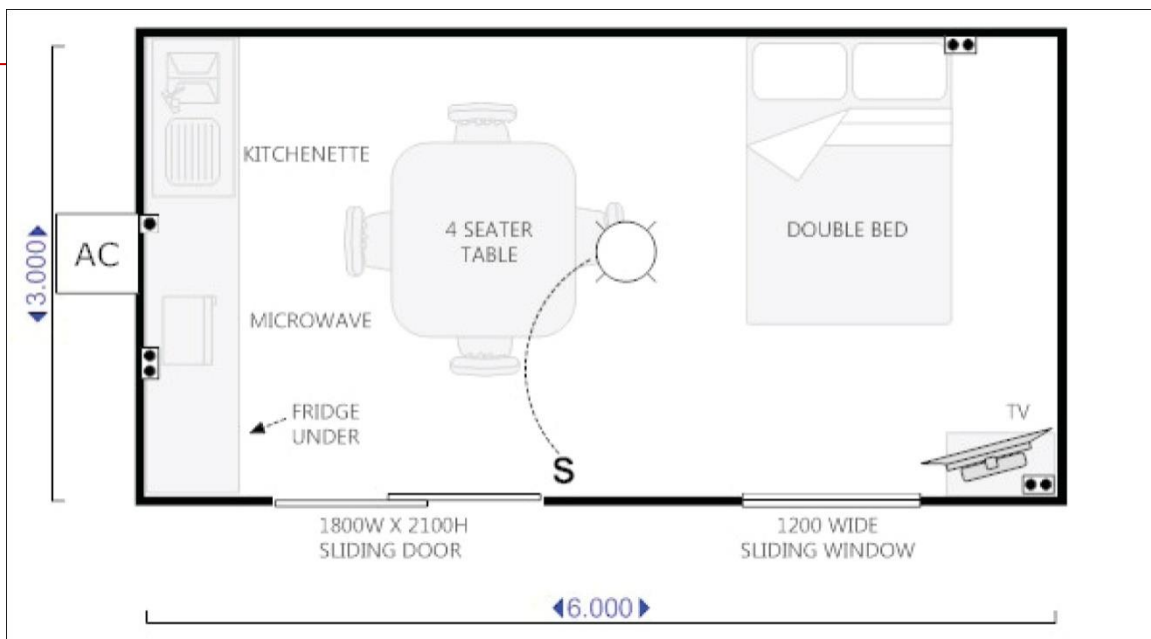


6.0 x 3.0 m Plan B
\$34,404

6.0 x 3.0m Range

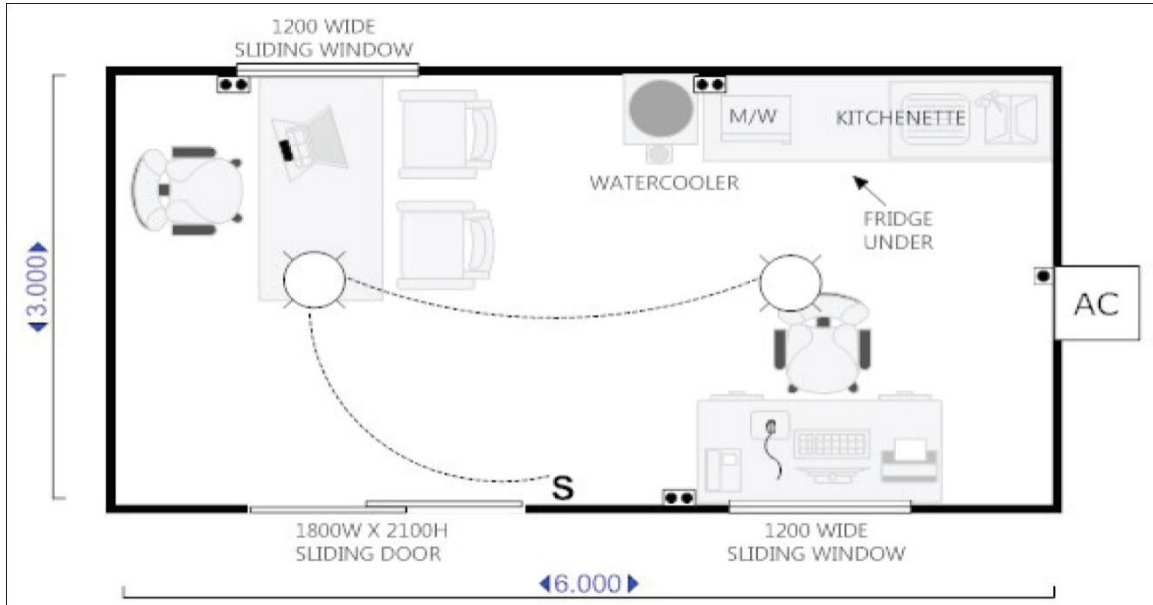


6.0 x 3.0 m Plan C
\$34,404



6.0 x 3.0 m Plan H
\$34,404

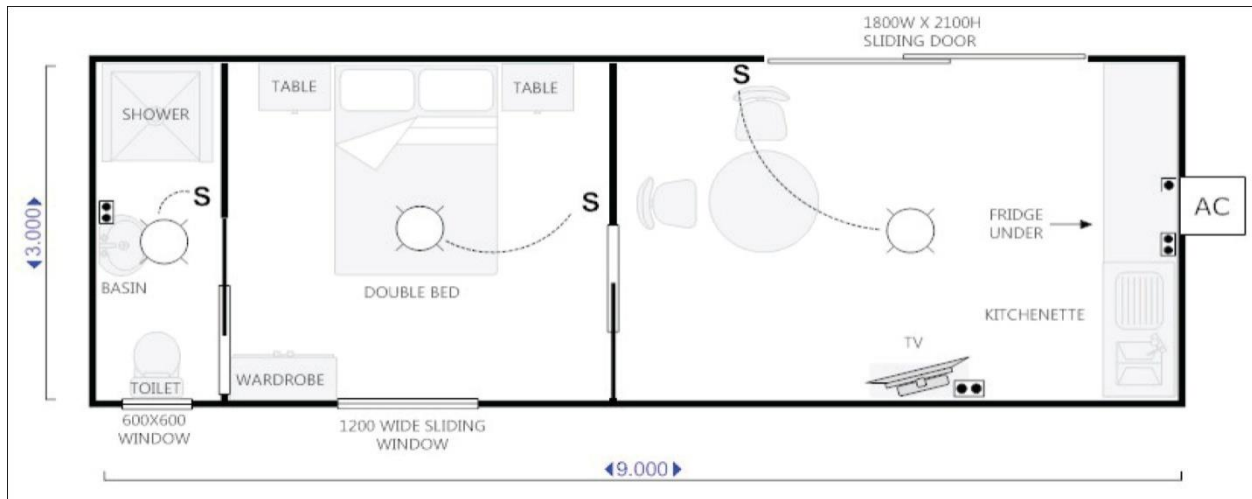
6.0 x 3.0m Range



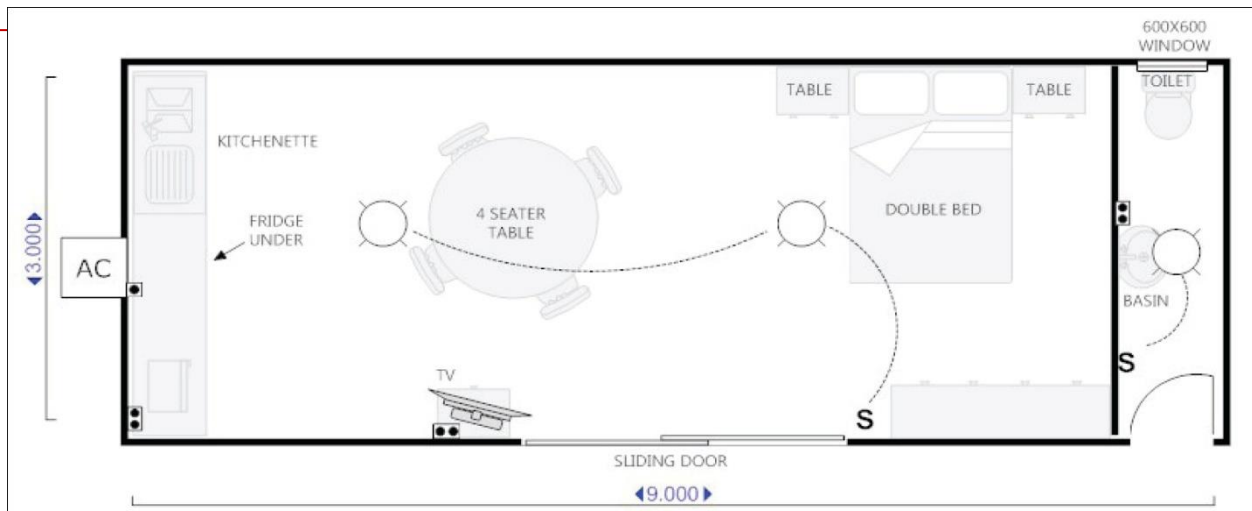
6.0 x 3.0 m Plan I
\$34,404

| LEGEND | |
|--------|-----------------------|
| S | LIGHT SWITCH |
| ●● | DOUBLE POWER POINT |
| ● | SINGLE POWER POINT |
| ○ | CEILING MOUNTED LIGHT |
| AC | AIR CONDITIONING |

9.0 x 3.0m Range

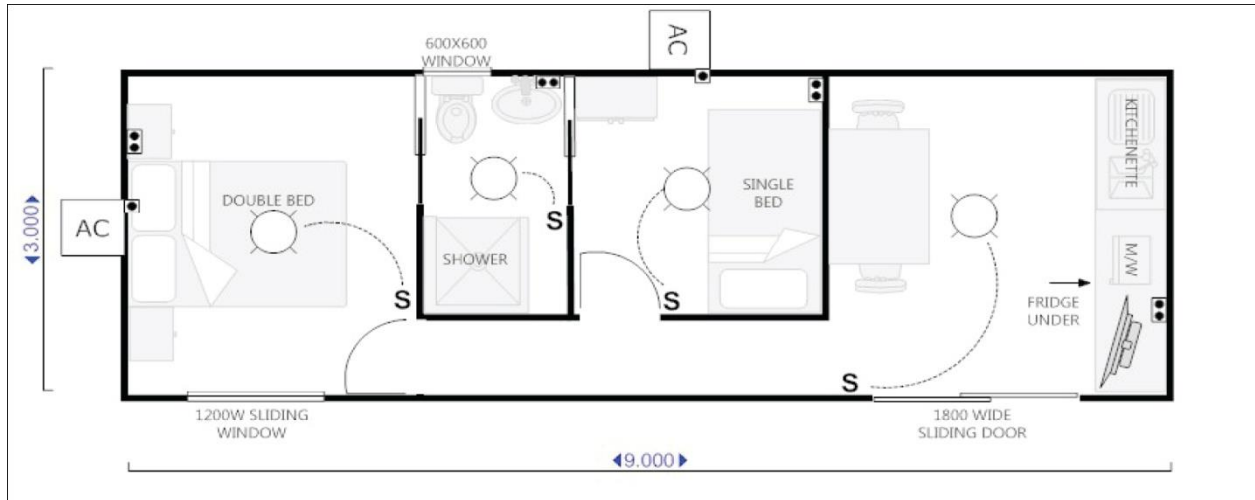


9.0 x 3.0 m Plan D
\$54,700



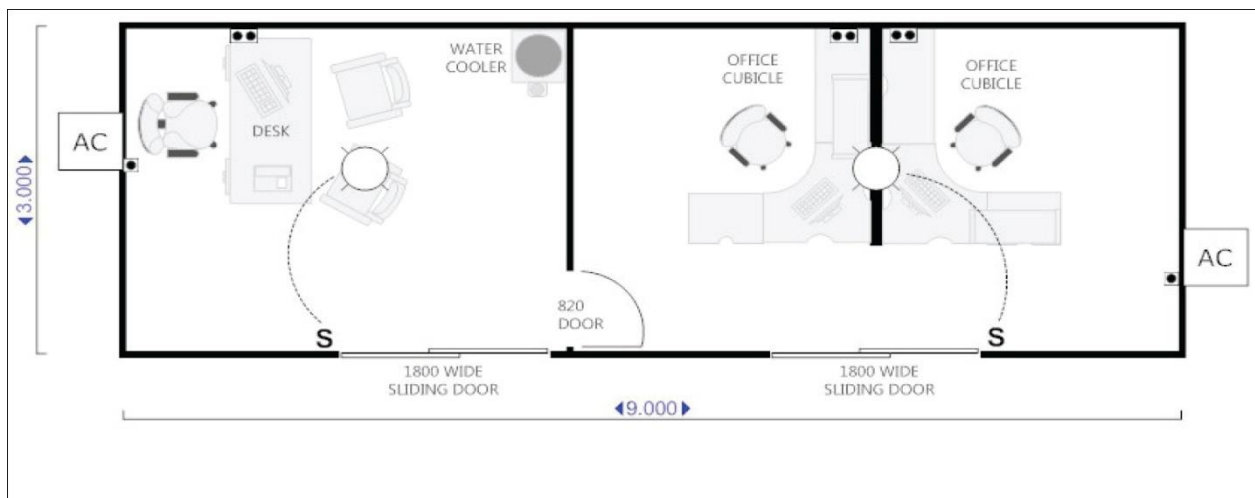
9.0 x 3.0 m Plan J
\$53,500

9.0 x 3.0m Range



9.0 x 3.0 m Plan Q

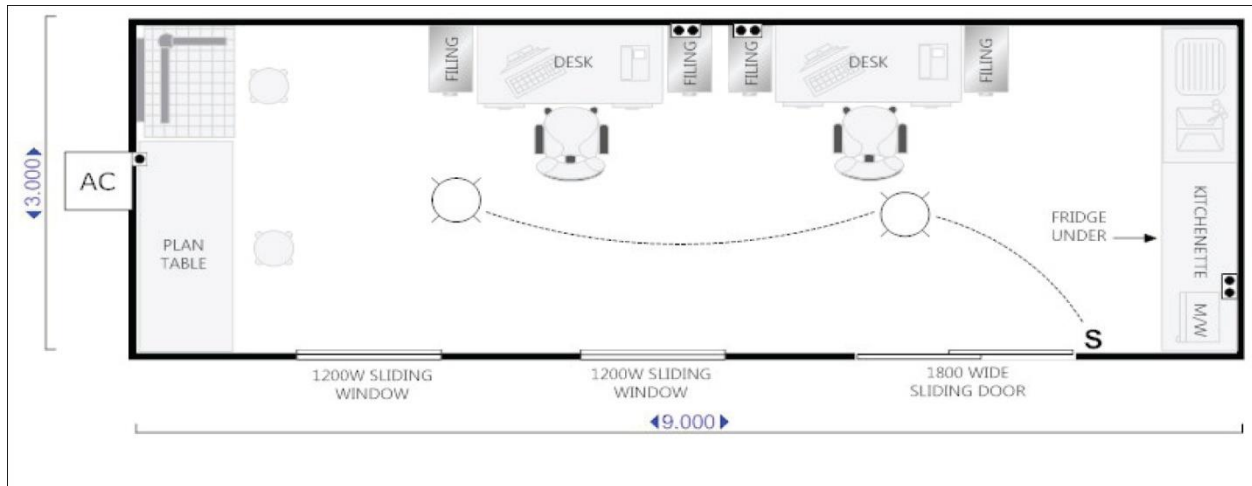
\$53,500



9.0 x 3.0 m Plan K

\$53,500

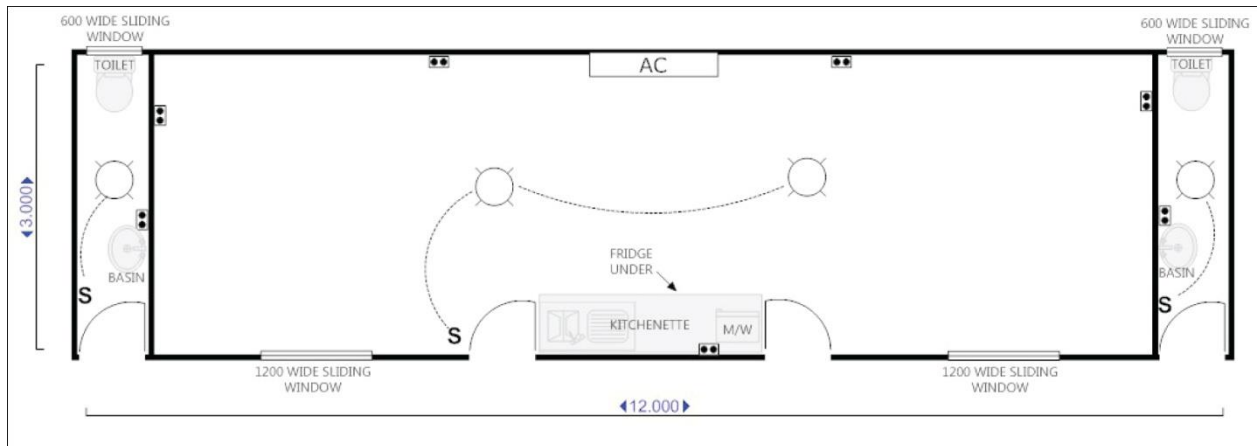
9.0 x 3.0m Range



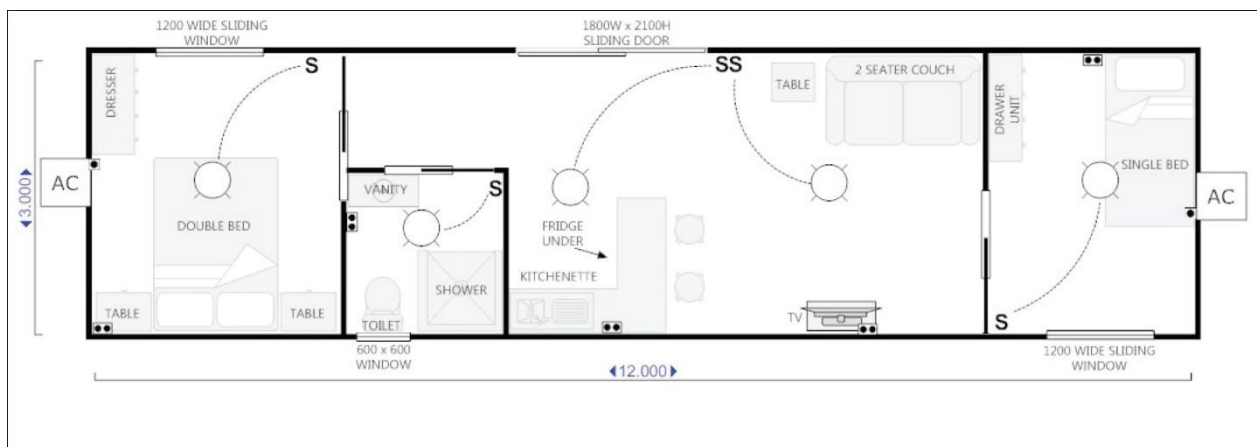
9.0 x 3.0 m Plan L
\$53,500

| LEGEND | |
|----------|-----------------------|
| S | LIGHT SWITCH |
| | DOUBLE POWER POINT |
| | SINGLE POWER POINT |
| | CEILING MOUNTED LIGHT |
| | AIR CONDITIONING |

12.0 x 3.0m Range

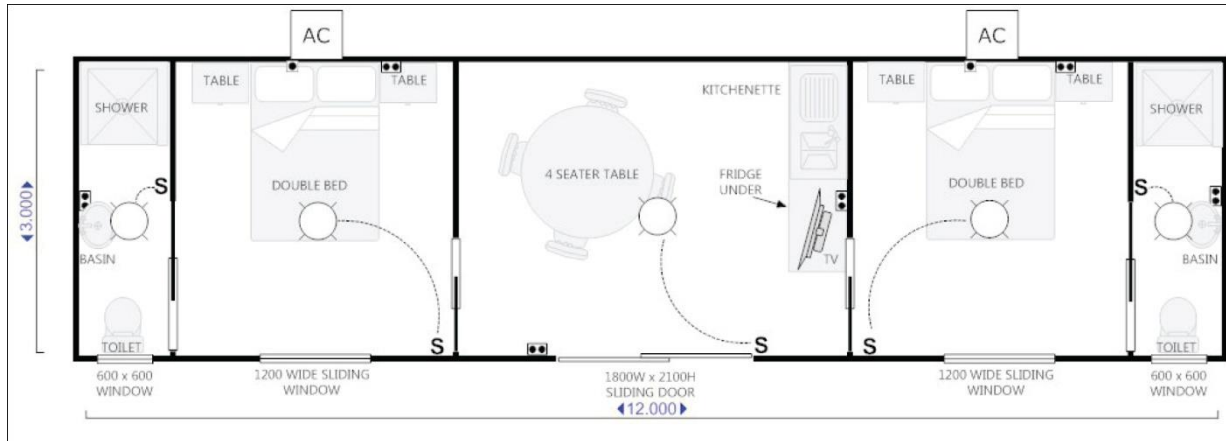


12.0 x 3.0 m Plan M
\$72,292



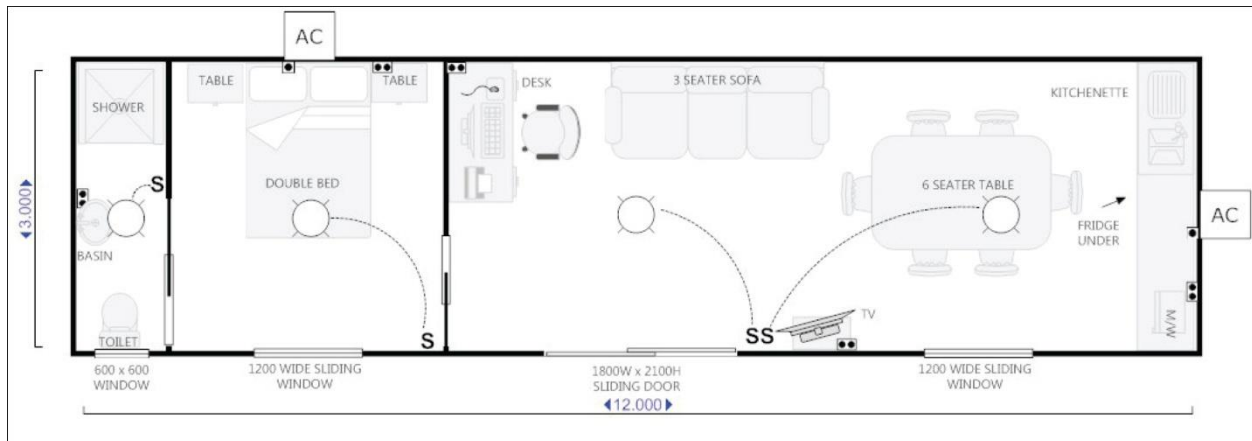
12.0 x 3.0 m Plan E
\$74,230

12.0 x 3.0m Range



12.0 x 3.0 m Plan F

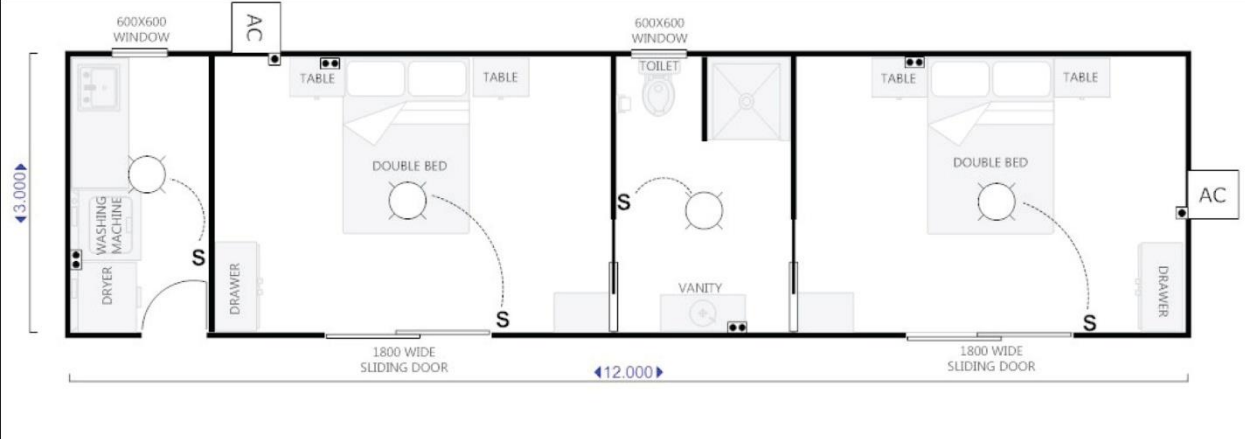
\$112,803



12.0 x 3.0 m Plan G

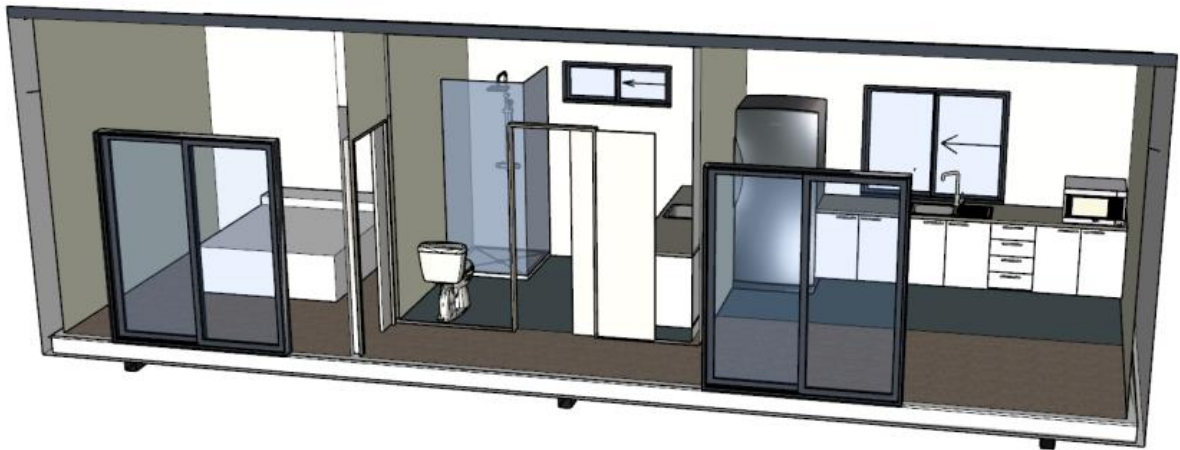
\$79,230

12.0 x 3.0m Range



12.0 x 3.0 m Plan O
\$82,230

| LEGEND | |
|--------|-----------------------|
| S | LIGHT SWITCH |
| ●● | DOUBLE POWER POINT |
| ● | SINGLE POWER POINT |
| ○ | CEILING MOUNTED LIGHT |
| AC | AIR CONDITIONING |



We build designs to our customers needs, requirements and requests.





Phone: 1300 933 035

Mobile: 0408 941 064

Email: info@ridgeportablesolutions.com.au

Website: www.ridgeportablesolutions.com.au

Address: 38 Fielding's Way, Ulverstone TAS 7315